

## Western Fishing District FAS Pictures



Flatiron Ridge - Clark Fork River near Thompson Falls



Pair-A-Dice FAS - Clark Fork River near Paradise



Tarkio East (Sandy Beach) in the Alberton Gorge

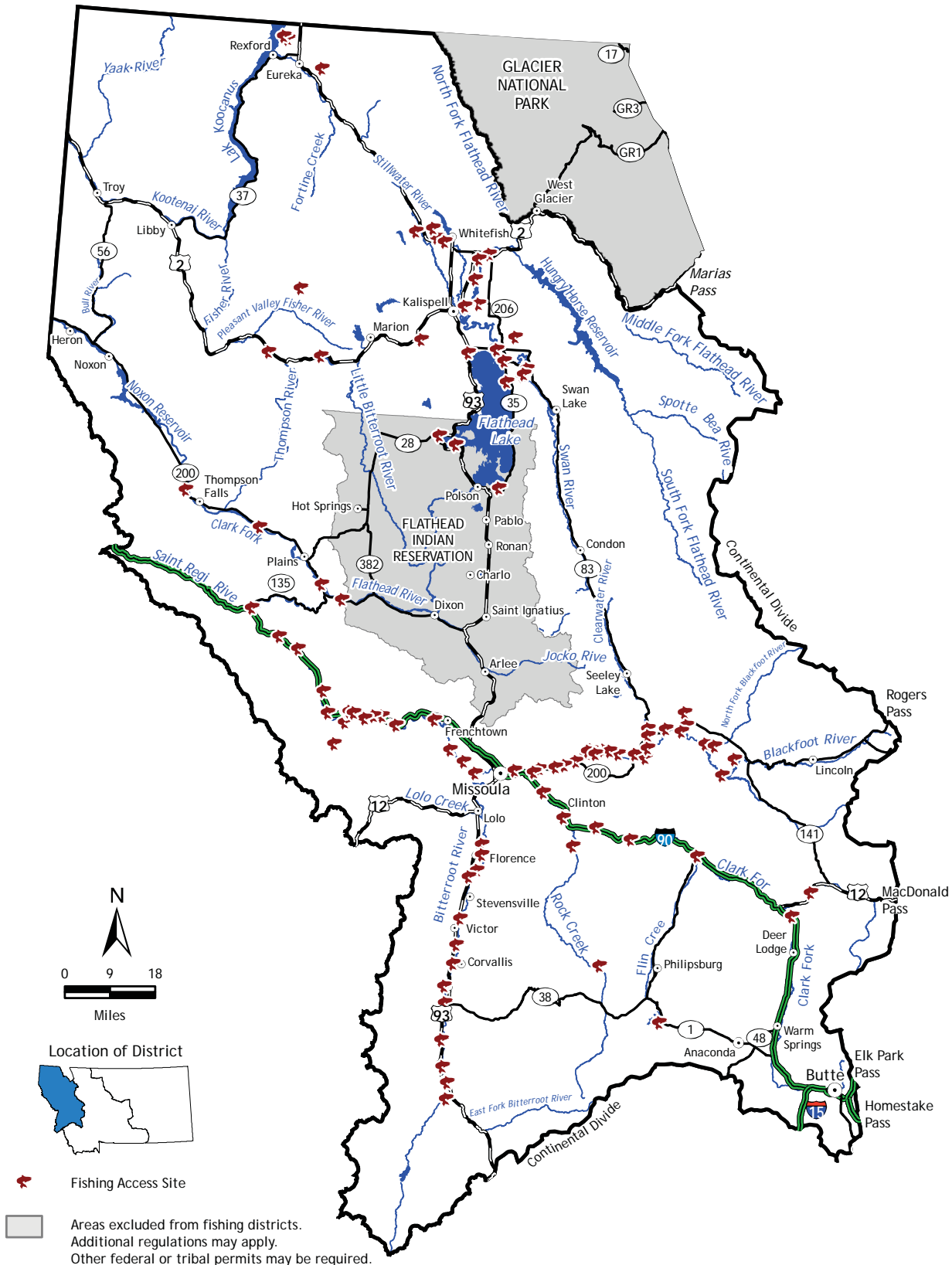


Hannon Memorial FAS - Bitterroot River south of Hamilton



Cyr Bridge FAS - west of Missoula

# Western Fishing District



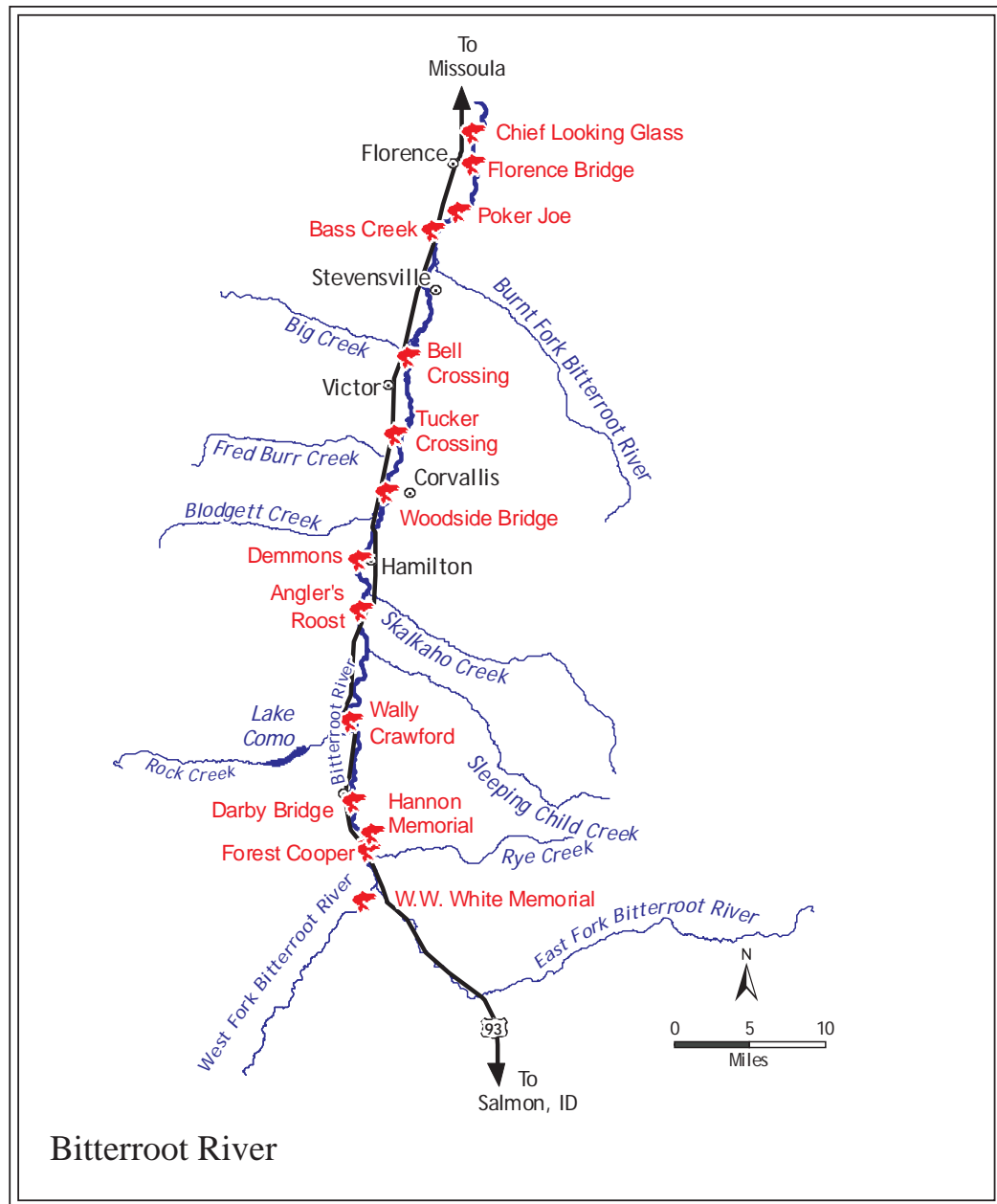
**The Western Fishing District includes all waters in Montana west of the Continental Divide.**

For additional information about fishing in this district, please call the following regional headquarters Monday-Friday 8:00 a.m. - 5:00 p.m.:

**Kalispell** .....406-752-5501  
**Missoula** .....406-542-5500  
**TTY (Telephone Device for the Deaf)**.....406-444-1200



# Bitterroot River



Wally Crawford FAS - Bitterroot River north of Darby



Chief Looking Glass FAS - Bitterroot River

# Bitterroot River

## Bitterroot River (Brown Trout, Mountain Whitefish, Rainbow Trout, Westslope Cutthroat Trout)

### Forest Cooper

- River Left, Mile 82

Day use only; undeveloped. Hunting and/or discharge of weapons prohibited.

**Directions:** 4 miles south of Darby where Hwy 93 meets West Fork Rd. (R2)

### Hannon Memorial

- River Right, Mile 82

5 campsites - fee for camping; hand launch; vault latrine; this site is split into two areas – a day use area and a camping area. The day use area has a concrete boat launch; vault latrine; no fee. Hunting and/or discharge of weapons prohibited.

**Directions:** 3.7 miles south of Darby, turn east on Rocky Mountain Road, travel 0.2 miles to day use site. Campsites are 0.2 miles further south off of Hwy 93. (R2)

### Darby Bridge

- River Left, Mile 78

Day use only; concrete boat launch; vault latrine. Hunting and/or discharge of weapons prohibited.

**Directions:** 0.5 miles south of Darby, turn east on Water Street for 0.5 miles to FAS sign, turn east, 0.2 miles. (R2)

### Wally Crawford

- River Left, Mile 72

Day use only; concrete boat launch; vault latrine. Hunting and/or discharge of weapons prohibited.

**Directions:** 3.7 miles north of Darby on Hwy 93, turn east on Old Darby Road, 0.25 miles. (R2)

### Angler's Roost

- River Right, Mile 62

Day use only; concrete boat launch; this site is privately owned, but open to public use. Check in at the Angler's Roost store office prior to using. Hunting and/or discharge of weapons prohibited.

**Directions:** 2.5 miles south of Hamilton on Hwy 93. (R2)

### Demmons

- River Right, Mile 57

Day use only; no boat launch. Hunting and/or discharge of weapons prohibited.

**Directions:** In Hamilton, from Hwy 93, travel 1.0 miles west on Main Street. (R2)

### Woodside Bridge

- River Right, Mile 52

Day use only; concrete boat launch; vault latrine; ADA fishing platform; adjoining private land trail system open to the public at no cost. Hunting and/or discharge of weapons prohibited.

**Directions:** From Hwy 93, take Hwy 373 (Woodside Cutoff Road) 0.5 miles east towards Corvallis. (R2)

### Tucker Crossing

- River Left, Mile 47

Day use only; concrete boat launch; vault latrine located at Tucker West. The majority of the site lies east of the river and is known as Tucker East. Access to Tucker East is gained off of the East Side Hwy turning west at the junction of Bailey Road. Discharge of weapons restricted as posted on-site.

**Directions:** 3 miles south of Victor off Hwy 93. (R2)

### Bell Crossing

- River Left, Mile 41

Day use only; gravel bar boat launch. Discharge of weapons restricted as posted on-site.

**Directions:** 1.5 miles north of Victor on Hwy 93, then 0.5 miles east on Route 370 (Bell Crossing Road). (R2)

### Bass Creek

- River Left, Mile 30

Day use only; no boat launch; walk-in access only. Discharge of weapons restricted as posted on-site.

**Directions:** 4.5 miles north of Stevensville on Hwy 93. (R2)

### Poker Joe

- River Left, Mile 28

Day use only; no boat launch; vault latrine; walk-in access (.25 miles to river) only. Discharge of weapons restricted as posted on-site.

**Directions:** 3.0 miles south of Florence on Hwy 93, turn east on Luby Lane for 0.5 miles to Simpson Lane, follow signs for 0.6 miles. (R2)

### Florence Bridge

- River Left, Mile 23

Day use only; gravel bar boat launch; vault latrine. Hunting and/or discharge of weapons prohibited.

**Directions:** From Florence, 1 mile east on East Side Hwy (MT Hwy 203). (R2)

### Chief Looking Glass

- River Left, Mile 21

17 campsites - fee for camping; open May 1 - November 30 only; hand launch; vault latrine. Hunting and/or discharge of weapons prohibited.

**Directions:** 6.5 miles south of Lolo on Hwy 93 to Chief Looking Glass Road, east 1.0 miles. (R2)

## West Fork Bitterroot River (Brown Trout, Mountain Whitefish, Rainbow Trout, Westslope Cutthroat Trout)

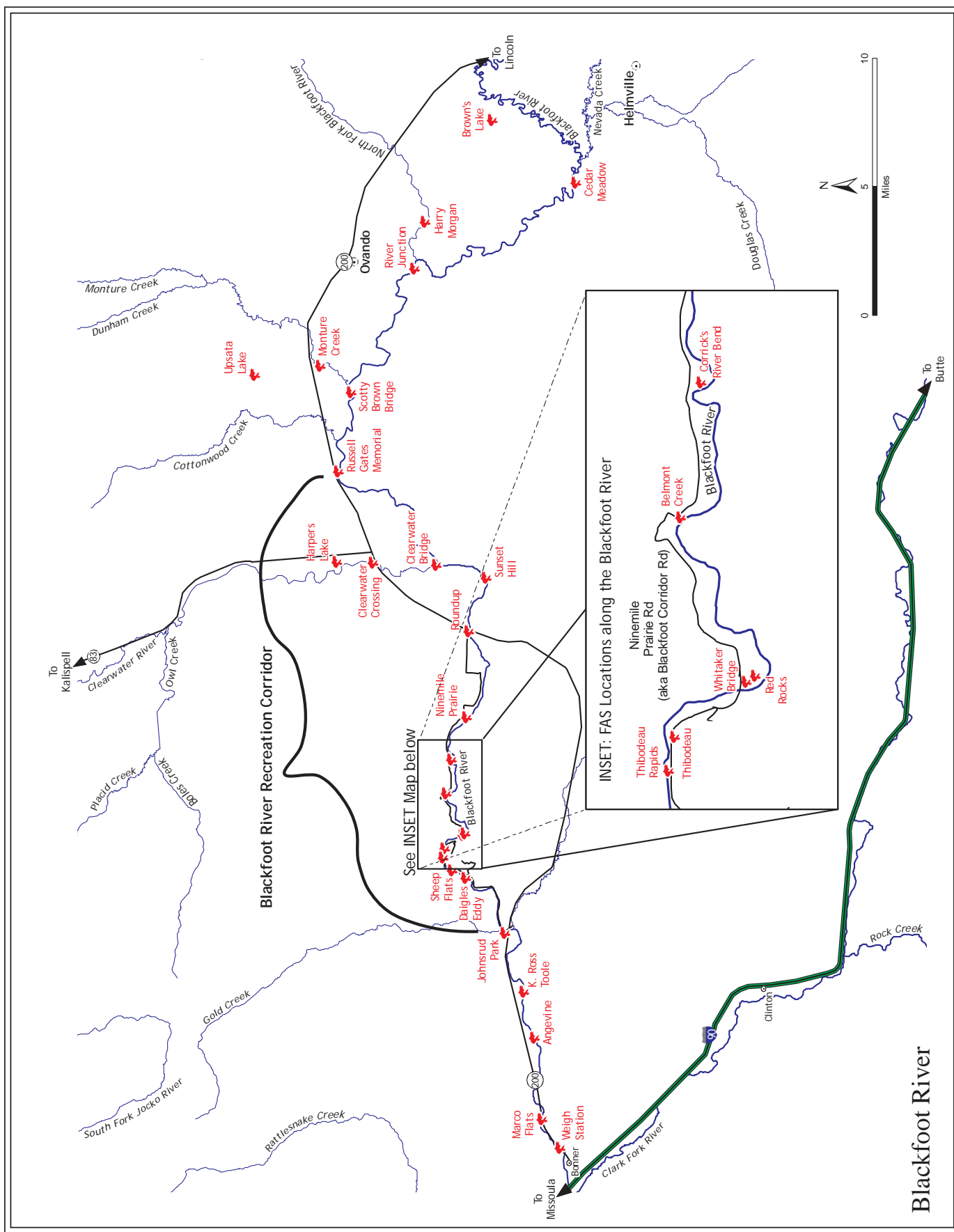
### WW White Memorial (see Bitterroot River map)

- River Left, Mile 2

Day use only; gravel bar launch area. Hunting and/or discharge of weapons prohibited.

**Directions:** 4 miles south of Darby on Hwy 93, turn southwest on West Fork Road for 3.5 miles. Turn is on east side of road. (R2)

# Blackfoot River and Adjacent Areas



# Blackfoot River and Adjacent Areas

## Blackfoot River (Bull Trout, Brown Trout, Mountain Whitefish, Rainbow Trout, Westslope Cutthroat Trout)

~Non-motorized watercraft only for Blackfoot River and its tributaries.

~Special recreation rules apply to the Blackfoot River and all sites in the Blackfoot River Recreation Corridor.

~Glass containers are prohibited on the Blackfoot River.

### Cedar Meadow

- River Right, Mile 64

Day use only; primitive boat launch. Hunting and/or discharge of weapons prohibited.

**Directions:** From Helmsville (starting from the post office), take the Ovando-Helmsville Road northwest for 4 miles. From Ovando take the Ovando-Helmsville Road northeast for 6 miles. (R2)

### River Junction

- River Right, Mile 52

6 campsites - fee for camping; gravel boat launch; vault latrine; Road to site is very rough. Discharge of weapons restricted as posted on-site.

**Directions:** 38 miles east of Bonner on Hwy 200, turn southeast on an unmarked county road (FAS sign at the junction) for 9 rough miles, follow the signs. (R2)

### Scotty Brown Bridge

- River Right, Mile 45

Day use only; hand launch; parking limited to 4 vehicles. No parking on county road within 300 yards of Scotty Brown Bridge. Hunting and/or discharge of weapons prohibited.

**Directions:** 38 miles east of Bonner on Hwy 200, turn southeast on an unmarked county road (FAS sign at the junction) for 0.8 miles. (R2)

### Russell Gates Memorial

- River Right, Mile 40

11 campsites - fee for camping; gravel boat launch; vault latrine; potable water. Hunting and/or discharge of weapons prohibited.

**Directions:** 34 miles east of Bonner on Hwy 200. (R2)

### Clearwater Bridge

- River Right, Mile 34

Day use only; hand launch; vault latrine; parking limited to 6 vehicles; no parking on Sunset Hill Road (parking restricted to designated parking areas only). Hunting and/or discharge of weapons prohibited.

**Directions:** 30 miles east of Bonner on Hwy 200, turn south on Sunset Hill Road for 2.4 miles. (R2)

### Sunset Hill

- River Left, Mile 32

Day use only; hand launch; parking limited to 3 vehicles; no parking on Sunset Hill Road (parking restricted to designated parking areas only). Hunting and/or discharge of weapons prohibited.

**Directions:** 30 miles east of Bonner on Hwy 200, turn south on Sunset Hill Road for 4.6 miles. (R2)

### Roundup

- River Right, Mile 29

Day use only; slide launch for rafts; vault latrine. Hunting and/or discharge of weapons prohibited.

**Directions:** 25.5 miles east of Bonner on Hwy 200, turn west (just before mile marker 27) on Ninemile Prairie Road for 0.1 miles. (R2)

### Ninemile Prairie

- River Right, Mile 25

4 campsites - fee for camping; no boat launch; vault latrine; access to water is difficult. Hunting and/or discharge of weapons prohibited.

**Directions:** 25.5 miles east of Bonner on Hwy 200, turn west (just before mile marker 27) on Ninemile Prairie Road for 4.2 miles. (R2)

### Corrick's River Bend

- River Right, Mile 23

9 campsites - fee for camping; gravel boat launch; vault latrine; potable water. Hunting and/or discharge of weapons prohibited.

**Directions:** 25.5 miles east of Bonner on Hwy 200, turn west (just before mile marker 27) on Ninemile Prairie road for 6 miles. (R2)

### Belmont Creek

- River Right, Mile 21

Day use only; no boat launch; walk-in access only. Hunting and/or discharge of weapons prohibited.

**Directions:** 10.3 miles east of Bonner on Hwy 200, turn north on Johnsrud Park Road for 9.5 miles. (R2)

### Whitaker Bridge

- River Right, Mile 19

Day use only; concrete boat launch; vault latrine. Hunting and/or discharge of weapons prohibited.

**Directions:** 10.3 miles east of Bonner on Hwy 200, turn north on Johnsrud Park Road for 6 miles. (R2)

### Red Rocks

- River Right, Mile 19

Day use only; no boat launch; walk-in access only. Hunting and/or discharge of weapons prohibited.

**Directions:** 10.3 miles east of Bonner on Hwy 200, turn north on Johnsrud Park Road for 6.1 miles. (R2)

### Thibodeau

- River Left, Mile 18

8 campsites - fee for camping; closed during winter months; vault latrine; potable water; no day use parking. Hunting and/or discharge of weapons prohibited.

**Directions:** 10.3 miles east of Bonner on Hwy 200, turn north of Johnsrud Park Road for 5.5 miles. (R2)

### Thibodeau Rapids

- River Left, Mile 17

Day use only; no boat launch; walk-in access only. Hunting and/or discharge of weapons prohibited.

**Directions:** 10.3 miles east of Bonner on Hwy 200, turn north on Johnsrud Park Road for 5 miles. (R2)



## Western Fishing District FAS Pictures



Petty Creek FAS - near Alberton



Brown's Lake FAS - near Ovando



Sophie Lake FAS - near Eureka



Russel Gates Memorial FAS - Blackfoot River east of Bonner



Harpers Lake FAS - near Clearwater Junction

# Blackfoot River and Adjacent Areas

## Sheep Flats

- River Left, Mile 16

Day use only; no boat launch; walk-in access only; access to river is difficult. Hunting and/or discharge of weapons prohibited.

**Directions:** 10.3 miles east of Bonner on Hwy 200, turn north on Johnsrud Park Road for 4 miles. (R2)

## Daigles Eddy

- River Left, Mile 15

Day use only; no boat launch; vault latrine; walk-in access to river is difficult. Hunting and/or discharge of weapons prohibited.

**Directions:** 10.3 miles east of Bonner on Hwy 200, turn north on Johnsrud Park Road for 3 miles. (R2)

## Johnsrud Park

- River Left, Mile 13

Day use only; closed during winter months; concrete boat launch; vault latrine; potable water; group use picnic shelter – for reservations call (406) 677-6804. Hunting and/or discharge of weapons prohibited.

**Directions:** 10.3 miles east of Bonner on Hwy 200, turn north on Johnsrud Park Road for 0.4 miles. (R2)

## K. Ross Toole

- River Left, Mile 9

Day use only; no boat launch; walk-in access only. Hunting and/or discharge of weapons prohibited.

**Directions:** 7 miles east of Bonner on Hwy 200. (R2)

## Angevine

- River Right, Mile 7

Day use only; closed during winter months; hand launch only; vault latrine. Hunting and/or discharge of weapons prohibited.

**Directions:** 5 miles east of Bonner on Hwy 200. (R2)

## Marco Flats

- River Left, Mile 3

Day use only; hand launch (150 feet from parking lot to river). Hunting and/or discharge of weapons prohibited.

**Directions:** 2 miles east of Bonner on Hwy 200. (R2)

## Weigh Station

- River Left, Mile 2

Day use only; concrete boat launch. Hunting and/or discharge of weapons prohibited.

**Directions:** 0.5 miles east of Bonner on Hwy 200. (R2)

## Browns Lake (Rainbow Trout)

### Brown's Lake (see Blackfoot River map)

12 campsites - fee for camping; concrete boat launch; vault latrine. Hunting and/or discharge of weapons prohibited.

**Directions:** From Ovando, east for 7 miles on Hwy 200, turn south on an unmarked county road (FAS sign on highway) for 3.5 miles. (R2)

## Clearwater River (Brown Trout, Rainbow Trout, Westslope Cutthroat Trout, Bull Trout, Mountain Whitefish, Northern Pike, Yellow Perch)

### Clearwater Crossing (see Blackfoot River map)

- River Left, Mile 4

6 campsites - fee for camping; hand launch; vault latrine. Hunting and/or discharge of weapons prohibited.

**Directions:** 30 miles east of Bonner on Hwy 200, or 0.5 miles west of Clearwater Junction. (R2)

## Harpers Lake (Rainbow Trout, Westslope Cutthroat Trout, Yellow Perch)

### Harpers Lake (see Blackfoot River map)

14 campsites - fee for camping; vault latrine; gravel boat launch on Harpers Lake and hand launch on Clearwater River; group use area and ADA fishing platform. Hunting and/or discharge of weapons prohibited.

**Directions:** 31 miles east of Bonner on Hwy 200, turn north on Hwy 83 for 2 miles. (R2)

## Monture Creek (Brook Trout, Brown Trout, Rainbow Trout, Westslope Cutthroat Trout, Bull Trout, Mountain Whitefish)

### Monture Creek (see Blackfoot River map)

- River Right, Mile 2

3 campsites - fee for camping; no boat launch; vault latrine. Discharge of weapons restricted as posted on-site.

**Directions:** 39 miles east of Bonner on Hwy 200. (R2)

## North Fork Blackfoot River (Brook Trout, Brown Trout, Mountain Whitefish)

### Harry Morgan (see Blackfoot River map)

- River Right, Mile 2

4 campsites - fee for camping; gravel boat launch; vault latrine. Hunting and/or discharge of weapons prohibited.

**Directions:** 3.5 miles south of Ovando on the Ovando-Helmville Road. (R2)

## Upsata Lake (Rainbow Trout, Large Mouth Bass)

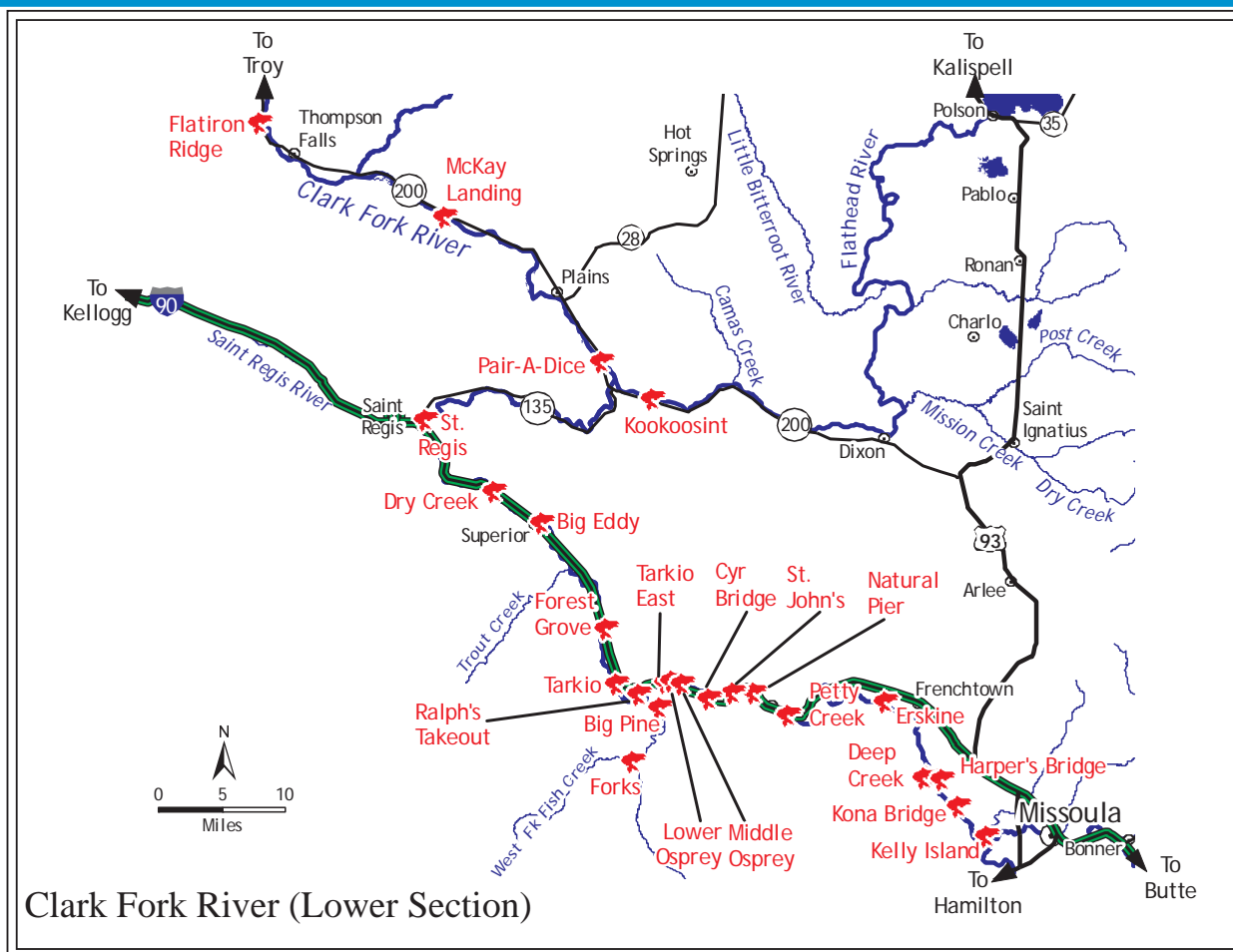
### Upsata Lake (see Blackfoot River map)

6 campsites - fee for camping; gravel boat launch; vault latrine. Hunting and/or discharge of weapons prohibited.

**Directions:** 37 miles east of Bonner on Hwy 200 to milepost 38, then 4 miles north on Woodworth Road. (R2)



## Clark Fork River (Lower Section) and Adjacent Areas



**Clark Fork River (Lower)** (Brown Trout, Bull Trout, Mountain Whitefish, Northern Pike, Rainbow Trout, Smallmouth Bass, Largemouth Bass, Westslope Cutthroat Trout, Yellow Perch)

#### Kelly Island

- River Left, Mile 209

Day use only; concrete boat ramp and vault latrine at Spurgin Road Access (at Spurgin Access); walk-in only at Mullan Road Access and 7th Street Access. Discharge of weapons restricted as posted on-site.

**Directions:** (1) Spurgin Road Access – I-90 and Reserve Street (Exit 101) in Missoula, then south on Reserve Street to Spurgin Road, right on Spurgin Road to Clements Road, right then immediately left on Spurgin Road to access. (2) Mullan Road Access – Reserve Street to Mullan Road, west on Mullan Road 3.5 miles to Cote Lane, follow signs. (3) 7th Street Access - Reserve Street to Spurgin Road, right on Spurgin Road to Clements Road, right then immediately left on Spurgin Road to Humble Avenue, take Humble 0.25 miles. (R2)

#### Kona Bridge

- River Left, Mile 205

Day use only; concrete boat launch; vault latrine. Hunting and/or discharge of weapons prohibited.

**Directions:** 4.9 miles west of Missoula on Mullan Road to Kona Ranch Road, west 0.9 miles to site. (R2)

#### Deep Creek

- River Left, Mile 200

Day use only; gravel boat launch. Hunting and/or discharge of weapons prohibited.

**Directions:** 4.9 miles west of Missoula on Mullan Road, turn onto Kona Ranch Road and follow signs for about 6 miles. (R2)

#### Harper's Bridge

- River Right, Mile 200

Day use only; concrete boat ramp; vault latrine. Hunting and/or discharge of weapons prohibited.

**Directions:** 8.1 miles west of Missoula on Mullan Road to Harper's Bridge Road, 1.5 miles to site. (R2)

#### Erskine

- River Right, Mile 190

Day use only; no boat launch (0.5 mile walk to river). Discharge of weapons restricted as posted on-site.

**Directions:** In Frenchtown, turn south onto Ducharme St, then west on Mullan Road for 2.2 miles to FAS sign, then south 0.7 miles. (R2)

#### Petty Creek

- River Left, Mile 178

Day use only; concrete boat ramp; vault latrine. Hunting and/or discharge of weapons prohibited.

**Directions:** 24 miles west of Missoula on I-90 to Exit 77, then 0.25 miles south. (R2)

# Clark Fork River (Lower Section) and Adjacent Areas

|  |                                |
|--|--------------------------------|
| <b>Natural Pier</b>  | <b>- River Right, Mile 174</b> |
| Day use only; no boat launch (access to river is difficult). Hunting and/or discharge of weapons prohibited.<br><b>Directions:</b> 26 miles west of Missoula on I-90 to Exit 75, south then west for 1 mile on frontage road. (R2)   |                                |
| <b>St. John's</b>  | <b>- River Right, Mile 172</b> |
| Day use only; gravel bar boat launch; vault latrine available at MDT rest area. Hunting and/or discharge of weapons prohibited.<br><b>Directions:</b> Access is via east bound lane of I-90 only. Take the scenic turnout just past Exit 70. (R2)  |                                |
| <b>Cyr Bridge</b>  | <b>- River Left, Mile 170</b>  |
| Day use only; raft slide launch; vault latrine; there is no access back to I-90 west-bound unless you travel 4 miles west on the frontage road. Hunting and/or discharge of weapons prohibited.<br><b>Directions:</b> 31 miles west of Missoula on I-90 to Exit 70 west bound lane only, continuing on frontage road across bridge, take left after bridge. (R2) |                                |
| <b>Middle Osprey</b>   | <b>- River Left, Mile 167</b>  |
| Day use only; no boat launch; access to river is difficult. Hunting and/or discharge of weapons prohibited.<br><b>Directions:</b> 35 miles west of Missoula off I-90 at Exit 66, travel north 0.3 miles, turn east on frontage road, travel east for 0.5 miles. (R2)   |                                |
| <b>Lower Osprey</b>  | <b>- River Left, Mile 166</b>  |
| Day use only; no boat launch; access to river is difficult. Hunting and/or discharge of weapons prohibited.<br><b>Directions:</b> 35 miles west of Missoula off I-90 at Exit 66, travel north 0.3 miles, turn west on frontage road, travel west for 0.3 miles. (R2)   |                                |
| <b>Tarkio East (Sandy Beach)</b>   | <b>- River Left, Mile 165</b>  |
| Day use only; no boat launch; access to river is difficult. Hunting and/or discharge of weapons prohibited.<br><b>Directions:</b> 35 miles west of Missoula off I-90 at Exit 66, travel north 0.3 miles, turn west on frontage road, travel 0.5 miles. (R2)  |                                |
| <b>Ralph's Takeout</b>   | <b>- River Left, Mile 163</b>  |
| Day use only; no boat launch; access to river is difficult. Hunting and/or discharge of weapons prohibited.<br><b>Directions:</b> 37 miles west of Missoula off I-90 at Exit 66. Travel west on frontage road 1.5 miles then left on gravel road 0.5 miles. (R2)   |                                |
| <b>Tarkio</b>  | <b>- River Right, Mile 160</b> |
| Day use only; concrete boat launch; vault latrine. Hunting and/or discharge of weapons prohibited.<br><b>Directions:</b> 40 miles west of Missoula on I-90 to Exit 61, southeast for 1 mile. (R2)  |                                |
| <b>Forest Grove</b>  | <b>- River Right, Mile 155</b> |
| 4 campsites - fee for camping; concrete boat launch; vault latrine. Hunting and/or discharge of weapons prohibited.<br><b>Directions:</b> 45 miles west of Missoula on I-90 to Exit 61, travel west on Mullan Road East (Frontage Road) for 4 miles. (R2)  |                                |
| <b>Big Eddy</b>  | <b>- River Right, Mile 143</b> |
| Day use only; gravel bar boat launch; vault latrine. Hunting and/or discharge of weapons prohibited.<br><b>Directions:</b> I-90 to Superior, Exit 47 to stop sign, left on 4th Ave. to River Street, right on River Street crossing the river to stop sign, right on Old Hwy 10 for 0.8 miles to site. (R2)  |                                |
| <b>Dry Creek</b>   | <b>- River Right, Mile 138</b> |
| Day use only; concrete boat launch; vault latrine. Hunting and/or discharge of weapons prohibited.<br><b>Directions:</b> 4 miles west of Superior on I-90 to Exit 43, then north 0.2 miles over bridge, then east 0.2 miles. (R2)  |                                |
| <b>St. Regis</b>   | <b>- River Left, Mile 128</b>  |
| Day use only; concrete boat launch; vault latrine. Hunting and/or discharge of weapons prohibited.<br><b>Directions:</b> I-90 to St. Regis, Exit 33, north 0.6 miles to FAS sign, then east 0.25 miles on Two Rivers Road. (R2)  |                                |
| <b>Pair-A-Dice</b>   | <b>- River Right, Mile 101</b> |
| Day use only; concrete boat ramp; gravel parking area for approximately 15 vehicles. Hunting and/or discharge of weapons prohibited.<br><b>Directions:</b> Approximately 0.5 miles east of Paradise on Highway 200. (R1)   |                                |
| <b>McKay Landing</b>   | <b>- River Left, Mile 81</b>   |
| Day use only; gravel/river bottom boat ramp.<br><b>Directions:</b> From Plains, approximately 21 miles west on River Road/Swamp Creek Road. (R1)   |                                |
| <b>Flatiron Ridge</b>  | <b>- River Left, Mile 61</b>   |
| Day use only; concrete boat ramp; vault latrine. Hunting and/or discharge of weapons prohibited.<br><b>Directions:</b> 2 miles west of Thompson Falls off of Hwy 200. (R1)   |                                |

# Clark Fork River (Lower/Upper Sections) and Adjacent Areas

## Fish Creek (Brown Trout, Rainbow Trout, Westslope Cutthroat Trout, Bull Trout, Mountain Whitefish)

### Big Pine (see Clark Fork River (Lower) map)

- River Right, Mile 2

5 campsites; no fee for camping; no boat launch; vault latrine; group use area - for reservations call (406) 542-5500; site of the largest known Ponderosa Pine in the area. Hunting and/or discharge of weapons prohibited.

**Directions:** Travel west of Missoula 35 miles on I-90 to Exit 66, turn south on Fish Creek Road for 4.5 miles. (R2)

## Flathead River (Bull Trout, Lake Trout, Lake Whitefish, Mountain Whitefish, Northern Pike, Rainbow Trout, Westslope Cutthroat Trout)

### Kookoosint (see Clark Fork River (Lower) map)

- River Left, Mile 4

Day use only; concrete boat ramp; vault latrine; gravel parking area for approximately 8 vehicles with trailers. Hunting and/or discharge of weapons prohibited.

**Directions:** Approximately 5 miles east of Paradise on Highway 200. (R1)

## West Fork Fish Creek (Rainbow Trout, Westslope Cutthroat Trout, Bull Trout)

### Forks (see Clark Fork River (Lower) map)

- River Right, Mile 0

5 campsites; no fee for camping; no boat launch; vault latrine. Hunting and/or discharge of weapons prohibited.

**Directions:** Travel west of Missoula 35 miles on I-90 to Exit 66, turn south on Fish Creek Road for 10 miles. (R2)



Big Pine FAS - Clark Fork River west of Missoula

## Beavertail Pond (Rainbow Trout, Westslope Cutthroat Trout, Largemouth Bass)

### Beavertail Pond (see Clark Fork River (Upper) map)

Day use only; gravel boat launch; vault latrine; manually powered or electric motors only. ADA accessible fishing platform. Hunting and/or discharge of weapons prohibited.

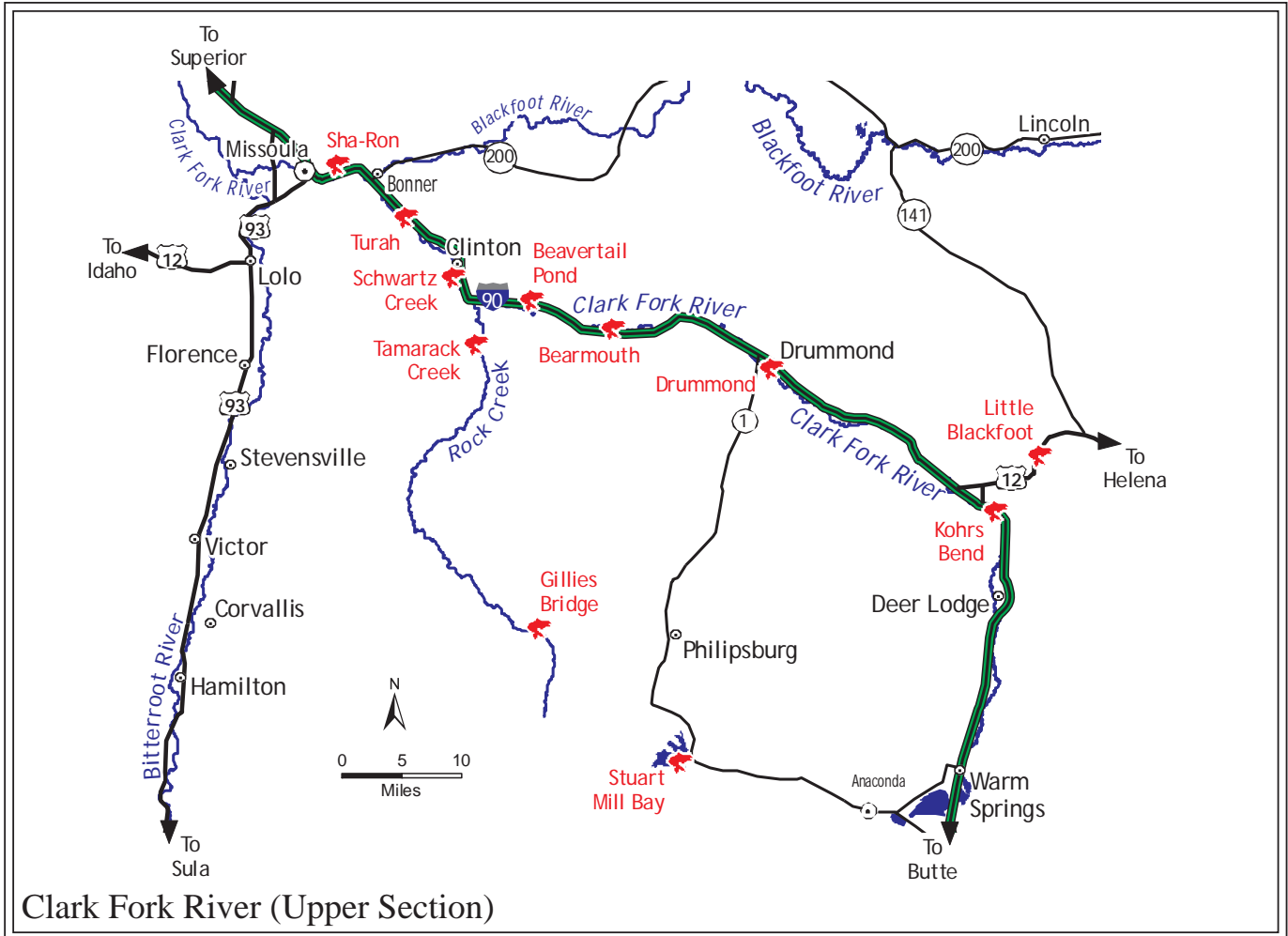
**Directions:** 26 miles east of Missoula on I-90 to Exit 130, 0.25 miles north. (R2)



Beavertail Pond FAS - east of Missoula



# Clark Fork River (Upper Section) and Adjacent Areas



Clark Fork River (Upper Section)

## Clark Fork River (Upper) (Brown Trout, Rainbow Trout, Westslope Cutthroat Trout, Mountain Whitefish, Northern Pike)

### Kohrs Bend

- River Right, Mile 304

Day use only; hand launch. Hunting and/or discharge of weapons prohibited.

**Directions:** 5 miles north of Deer Lodge on I-90 to Exit 179, then west on gravel road. (R2)

### Drummond

- River Left, Mile 273

Day use only; concrete boat launch; vault latrine; site maintained and managed by the city of Drummond. Hunting and/or discharge of weapons prohibited.

**Directions:** From the junction of I-90 and Hwy 1 (Exit 154), travel south on Hwy 1 for 0.8 miles, turn left at FAS sign (mile marker 63), then go 0.5 miles turning into entrance to Drummond City Park. (R2)

### Bearmouth

- River Right, Mile 254

Day use only; no boat launch. Discharge of weapons restricted as posted on-site.

**Directions:** 33 miles east of Missoula on I-90 to Exit 138, then north for 0.1 miles. (R2)

### Schwartz Creek

- River Right, Mile 236

Day use only; gravel boat launch; vault latrine. Hunting and/or discharge of weapons prohibited.

**Directions:** 15 miles east of Missoula on I-90 to Exit 120, turn south going over railroad tracks to East Mullan Road (frontage road), turn left, going 1.7 miles to Schwartz Creek Road, then 0.5 miles to site. (R2)

### Turah

- River Left, Mile 228

Day use only; gravel boat launch; vault latrine. Hunting and/or discharge of weapons prohibited.

**Directions:** 8 miles east of Missoula on I-90 to Exit 113, south then east for 2 miles. (R2)

### Sha-Ron

- River Right, Mile 219

Day use only; gravel boat launch. Hunting and/or discharge of weapons prohibited.

**Directions:** 2 miles east of Missoula on I-90 to Exit 107 (East Missoula), north on Old Hwy 10 (main road through East Missoula) for 1 mile, right on Speedway Avenue, then an immediate left into site. (R2)

## Clark Fork River (Upper Section) and Adjacent Areas

### Georgetown Lake (Brook Trout, Rainbow Trout, Kokanee Salmon)

#### Stuart Mill Bay (see Clark Fork River (Upper) map)

16 campsites - fee for camping; campground closed during winter months. Typically campground opens prior to Memorial day; gravel shallow water boat launches for small craft; vault latrine; day use parking for ice fishermen during winter months. Discharge of weapons restricted as posted on-site.

**Directions:** 13 miles west of Anaconda on Hwy 1, turn onto Georgetown Lake Road and travel southwest about 1.5 miles to FAS sign. (R2)

### Little Blackfoot River (Brown Trout, Brook Trout, Westslope Cutthroat Trout, Mountain Whitefish)

#### Little Blackfoot (see Clark Fork River (Upper) map)

- River Left, Mile 10

Day use only. Hunting and/or discharge of weapons prohibited.

**Directions:** From Garrison (junction of I-90 and Hwy 12) travel east on Hwy 12 for 8 miles. (R2)

### Rock Creek (Brook Trout, Brown Trout, Mountain Whitefish, Mountain Whitefish, Rainbow Trout, Westslope Cutthroat Trout)

#### Gillies Bridge (see Clark Fork River (Upper) map)

- River Right, Mile 43

Day use only; hand launch. Hunting and/or discharge of weapons prohibited.

**Directions:** 14 miles west of Philipsburg on County Rd 348. (R2)

#### Tamarack Creek (see Clark Fork River (Upper) map)

- River Left, Mile 6

Day use only; hand launch; undeveloped. Hunting and/or discharge of weapons prohibited.

**Directions:** 21 miles east of Missoula on I-90 to Exit 126, travel south for 4 miles. (R2)

### Echo Lake (Brook Trout, Kokanee Salmon, Lake Whitefish, Northern Pike, Largemouth Bass, Rainbow Trout, Yellow Perch)

#### Echo Lake (see Flathead Lake map)

Day use only; concrete boat ramp; dock; access for trailers (max trailer length 25 ft); vault latrine; boat trailer parking for up to 12 vehicles and 10 single vehicle parking spaces; on-site host.

**Directions:** About 3 miles northeast of Bigfork, turn north off Highway 83 on Echo Lake Road at the Swan River School. Proceed approximately 3 miles and take the 2nd left after the Causeway onto Echo Lake Cabin Loop Road. Proceed 0.3 miles and turn right on the Echo Lake FAS road. (R1)



Stuart Mill Bay FAS - Clark Fork River (Upper)

# Flathead Lake and Adjacent Areas

## Flathead Lake (Lake Trout, Lake Whitefish, Westslope Cutthroat Trout, Yellow Perch)

### Bigfork

Day use only; concrete boat ramp & dock (seasonal closures during winter; no boat launch when lake elevation drops below 2890 feet); access for trailers (max trailer length 30 ft); vault latrine. Hunting and/or discharge of weapons prohibited.

**Directions:** Off Hwy 35 at Milepost 31. (R1)

### Ducharme

Day use only; hand launch only; access for boat trailers; undeveloped site. Hunting and/or discharge of weapons prohibited.

**Directions:** 3 miles east of Polson off of Hwy 35. (R1)

### Elmo

Day use only; year round; concrete boat ramp & dock; access for trailers (max trailer length 35 ft); vault latrine. Hunting and/or discharge of weapons prohibited.

**Directions:** Located on Hwy 93 approximately 26 miles south of Kalispell on the west shore of Flathead Lake near Rollins, MT. (R1)

### Somers

Day use only; concrete boat ramp & dock; access for trailers (max trailer length 35 ft); latrine has flush toilet. Hunting and/or discharge of weapons prohibited.

**Directions:** On Hwy 93 1 mile south of Somers. (R1)

### Walstad

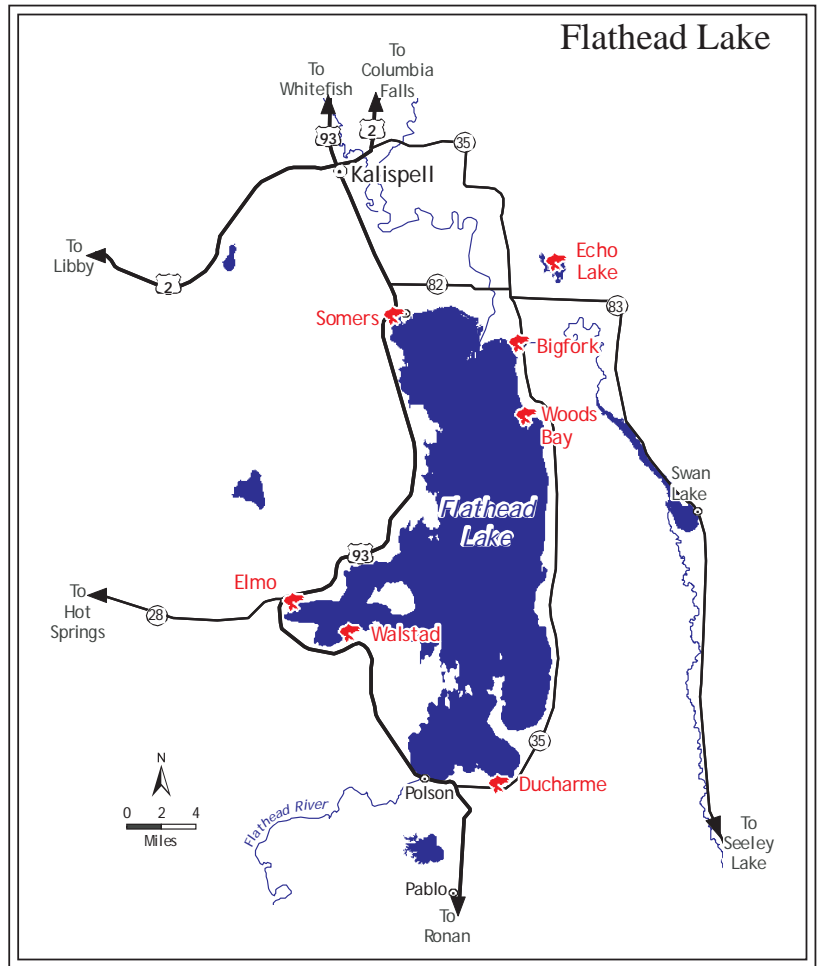
Day use only; concrete boat ramp & dock; access for trailers (max trailer length 30 ft); vault latrine. Hunting and/or discharge of weapons prohibited.

**Directions:** 10 miles north of Polson on Hwy 93 at milepost 72. (R1)

### Woods Bay

Day use only; concrete boat ramp & dock (not usable below lake level 2885'); access for trailers (max trailer length 30 ft); vault latrine. Hunting and/or discharge of weapons prohibited.

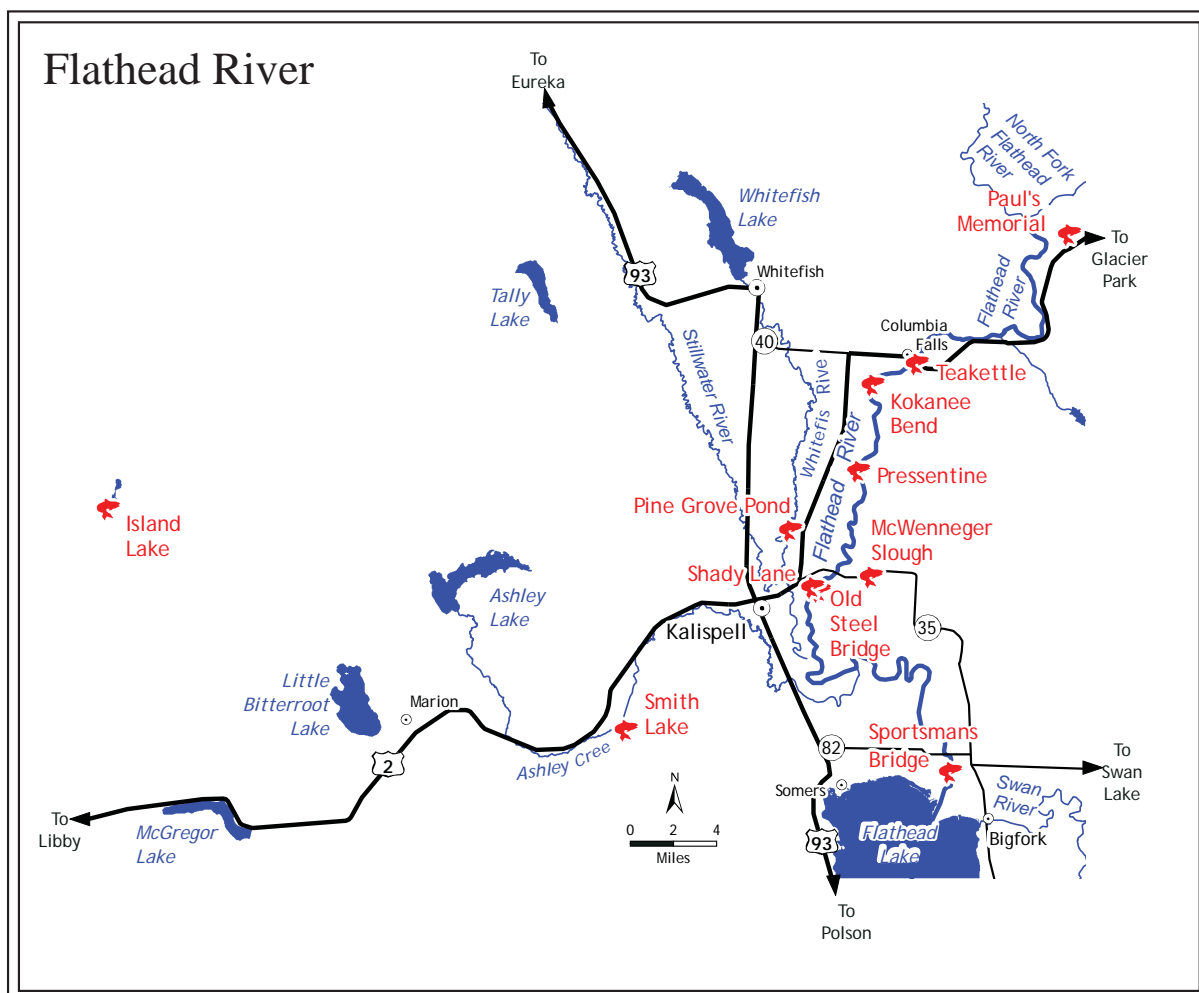
**Directions:** 14 miles south of Bigfork on Hwy 35 to milepost 27, then 1 mile west on County Road. (R1)



Bigfork FAS - Flathead Lake.



## Flathead River and Adjacent Areas



**Flathead River** (Bull Trout, Lake Trout, Lake Whitefish, Mountain Whitefish, Northern Pike, Rainbow Trout, Westslope Cutthroat Trout)

#### Teakettle

- River Right, Mile 144

Day use only; concrete boat ramp; vault latrine. Hunting and/or discharge of weapons prohibited.

**Directions:** On Hwy 40 at Columbia Falls Bridge, milepost 7. (R1)

#### Kokanee Bend

- River Right, Mile 141

Day use only; gravel/river bottom boat ramp; vault latrine.

**Directions:** 14 miles north of Kalispell on Hwy 206 to milepost 136, then 3 miles west on County Road. (R1)

#### Pressentine

- River Right, Mile 136

Day use only; gravel/river bottom boat ramp; vault latrine. Hunting and/or discharge of weapons prohibited.

**Directions:** 7 miles northeast of Kalispell on Hwy 2, then east on Birch Grove Road. (R1)

#### McWeneger Slough

- River Left, Mile 130

Day use only; small gravel boat launch; vault latrine.

**Directions:** 4 miles east of Kalispell on Hwy 35, milepost 47. (R1)

#### Old Steel Bridge

- River Right, Mile 129

Day use only; gravel/river bottom boat ramp; vault latrine; this site contains an accessible fishing platform and the Shady Lane Kids Fishing Pond. Hunting and/or discharge of weapons prohibited.

**Directions:** From Hwy 35 east in Kalispell turn right on Shady Lane for 0.75 mile, then left on Kiawanis Lane for 0.5 mile. (R1)

#### Sportsmans Bridge

- River Left, Mile 108

Day use only; concrete boat ramp (high and low water ramps available); access for trailers (max trailer length 30 ft); vault latrine; access to Flathead River and Flathead Lake. Hunting and/or discharge of weapons prohibited.

**Directions:** 6 miles south of Kalispell on Hwy 93 to milepost 104, then 6 miles east on Hwy 82. (R1)

# Flathead River and Adjacent Areas

## Island Lake (Largemouth Bass, Yellow Perch)

### Island Lake (see Flathead River map)

1 campsite; no boat ramp; this is a primitive site with no improvements except a small gravel parking area. Site development is planned for the fall of 2013. Development will include a parking area, vault latrine, 3-4 camp sites and a boat ramp. Open during established hunting seasons with no weapons restrictions.

**Directions:** From Kalispell go approximately 32 miles west on Hwy 2 towards Libby to Lost Prairie Rd opposite Boisverts FAS. Turn north on Lost Prairie Rd and go approx 16 miles to Island Lake. Alternately, proceed 38 miles west of Kalispell on Hwy 2 to Happys Inn. At Happys Inn, turn north on Pleasant Valley Fisher Rd and proceed 15 miles to Island Lake.

## Lake Five

### Paul's Memorial (see Flathead River map)

Day use only; concrete boat ramp and dock; vault latrine; access for trailers (max trailer length 25 ft); boat trailer parking for up to 8 vehicles; on-site host. Paul's Memorial is located on Lake Five, which has the following waterbody use restriction: personal watercraft are prohibited. Hunting and/or discharge of weapons prohibited.

**Directions:** Located approximately 31 miles northeast of Kalispell. About 4 miles northeast of Coram, turn west off Highway 2 onto Lake Five Road. Proceed approximately .5 miles and turn left at intersection with Belton Stg. Rd. Continue on Belton Stg. Rd. for .8 miles and turn right at Paul's Memorial Fishing Access Site sign. (R1)

## Pine Grove Pond (Rainbow Trout, Westslope Cutthroat Trout)

### Pine Grove Pond (see Flathead River map)

Day use only; vault latrine; paved and gravel paths; easily accessible fishing pier. Catch-and-release for trout, except anglers 14 years of age and younger may take 1. Speed limit 10 mph on fishing access site roads. Hunting and/or discharge of weapons prohibited.

**Directions:** This 5 acre family fishing pond is 3 miles northeast of Kalispell off Rose Crossing east of Whitefish Stage Road and just west of the Whitefish River. From intersection of Rose Crossing and Hwy 2, proceed west for approximately 1 mile, turn south at sign. (R1)

## Shady Lane Pond (Black Bullhead, Pumpkinseed, Westslope Cutthroat Trout)

### Shady Lane (see Flathead River map)

Day use only; no boat ramp; vault latrine; children's fishing pond. Hunting and/or discharge of weapons prohibited.

**Directions:** From Highway 35 on the east side of Kalispell turn on Shady Lane at mile post 123. Go south on Shady Lane to Conrad Dr and turn left. Park in the Old Steel Bridge FAS parking lot just before crossing the Old Steel Bridge, walk across the road and about 150 yards to the pond. (R1)

## Smith Lake (Northern Pike, Yellow Perch)

### Smith Lake (see Flathead River map)

Day use only; gravel/lake bottom boat ramp and ADA accessible fishing dock; vault latrine.

**Directions:** 7 miles west of Kalispell on Hwy 2 to milepost 112, then 2 miles south on County Road. (R1)

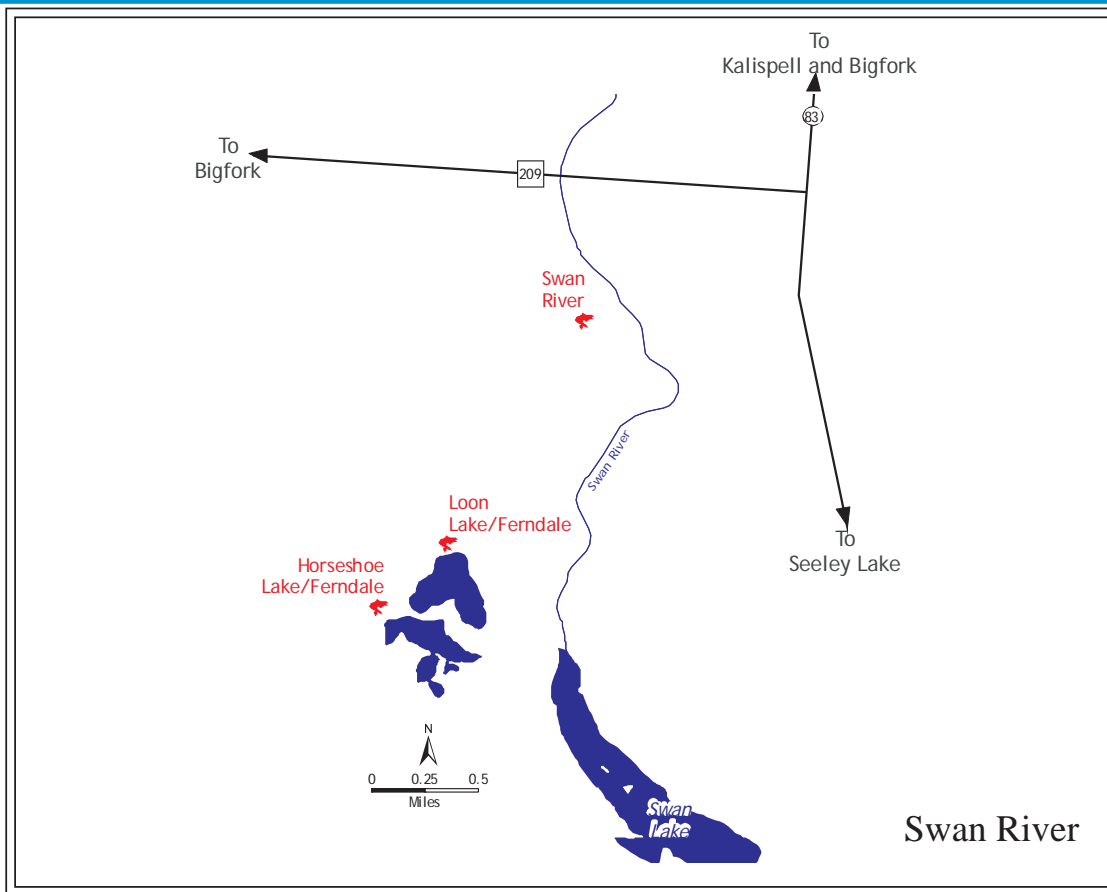


Pine Grove Pond FAS.



Paul's Memorial FAS - Lake Five.

## Swan River and Adjacent Areas



### Horseshoe Lake (Pumpkinseed, Smallmouth Bass)

#### Horseshoe Lake/Ferndale (see Swan River map)

Day use only; gravel/lake bottom boat ramp; access for trailers (max trailer length 25 ft). Hunting and/or discharge of weapons prohibited.

**Directions:** 3 miles east of Bigfork on Hwy 209, then southeast on County Road for 5 miles. (R1)

### Loon Lake (Largemouth Bass, Rainbow Trout, Smallmouth Bass, Yellow Perch)

#### Loon Lake/Ferndale (see Swan River map)

Day use only; gravel/lake bottom boat ramp (on private property - gasoline engines not allowed).

**Directions:** 3 miles east of Bigfork on Hwy 209, then 2 miles south and 2 miles east on County Road. (R1)

### Swan River (Brook Trout, Mountain Whitefish, Northern Pike, Rainbow Trout, Westslope Cutthroat Trout)

#### Swan River

- River Left, Mile 13

Day use only; hand launch only; no boat ramp.

**Directions:** 3 miles east of Bigfork on Hwy 209, then 1.5 miles southeast on County Road. At Ferndale. (R1)



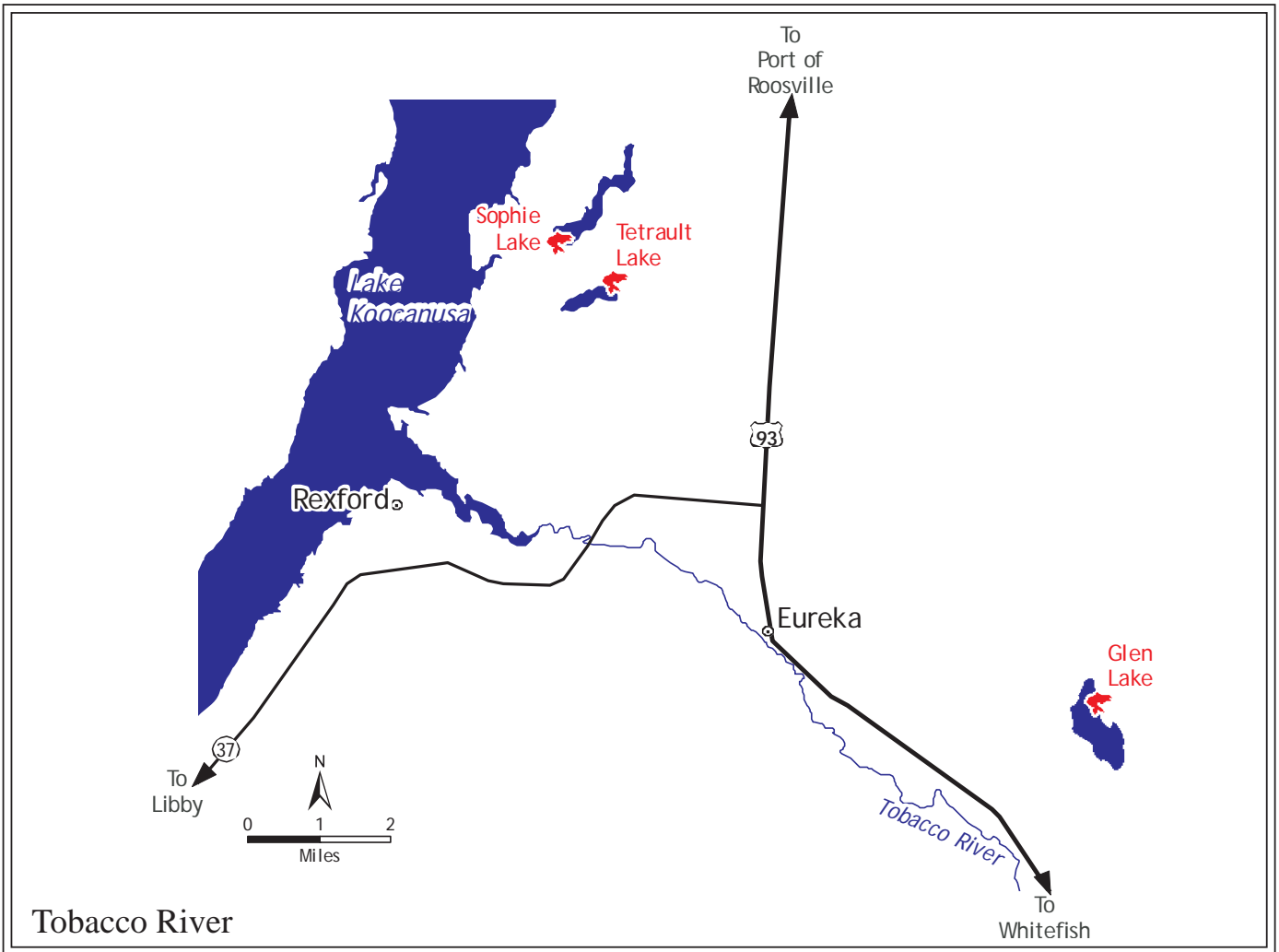
Swan River FAS - east of Bigfork



Loon Lake/Ferndale FAS - east of Bigfork



# Tobacco River and Adjacent Areas



## Glen Lake (Kokanee Salmon, Rainbow Trout, Yellow Perch)

### Glen Lake (see Tobacco River map)

Day use only; concrete boat ramp; vault latrine; picnic area. Hunting and/or discharge of weapons prohibited.

**Directions:** 6 miles south of Eureka off Hwy 93, then 6 miles east on County Road. (R1)

## Sophie Lake (Bass, Bluegill, Northern Pike, Rainbow Trout)

### Sophie Lake (see Tobacco River map)

Day use only; gravel/lake bottom boat ramp; vault latrine; picnic area. Hunting and/or discharge of weapons prohibited.

**Directions:** 4 miles northwest of Eureka on Hwy 37, then 4 miles north on County Road. (R1)

## Tetrault Lake (Bluegill, Largemouth Bass, Rainbow Trout, Smallmouth Bass, Westslope Cutthroat Trout)

### Tetrault Lake (see Tobacco River map)

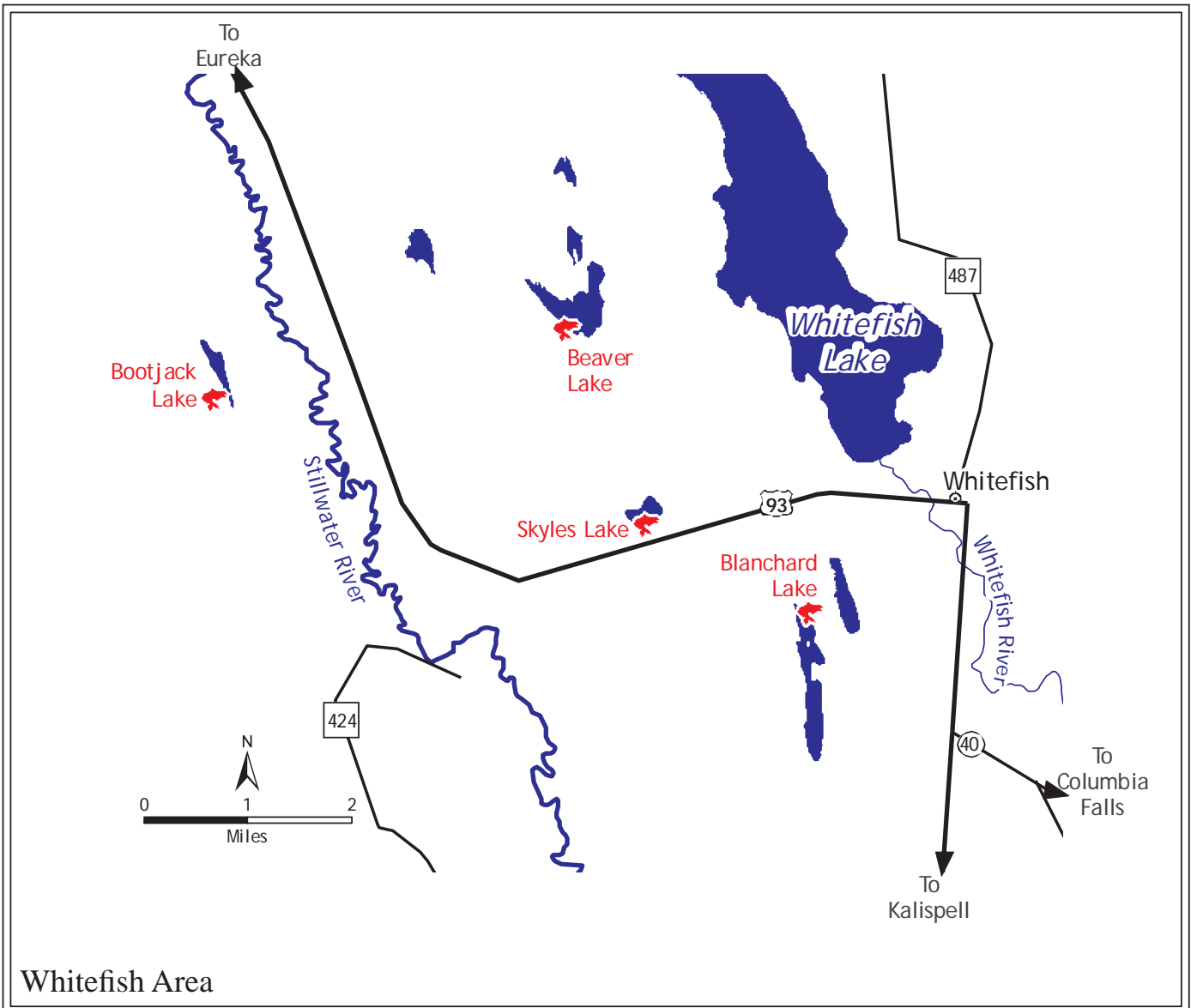
Day use only; gravel/lake bottom boat ramp; vault latrine; picnic area. Hunting and/or discharge of weapons prohibited.

**Directions:** 4 miles northwest of Eureka on Hwy 37 to milepost 65, then 3.5 miles northeast on County Road. (R1)



Tetrault Lake FAS - near Eureka

# Whitefish Area



## Beaver Lake (Kokanee Salmon, Rainbow Trout)

### Beaver Lake (see Stillwater River map)

Day use only; concrete boat ramp.

**Directions:** 6.5 miles west of Whitefish on Hwy 93, then 2.5 miles east on Beaver Lake Road. (R1)

## Blanchard Lake (Largemouth Bass, Northern Pike, Yellow Perch, Black Crappie)

### Blanchard Lake (see Stillwater River map)

Day use only; gravel boat ramp; boat ramp at this site does not provide access to the main lake at low levels. Hunting and/or discharge of weapons prohibited.

**Directions:** 2 miles south of Whitefish on Hwy 93, then 3 miles west on County Road. (R1)

## Bootjack Lake (Rainbow Trout, Westslope Cutthroat Trout)

### Bootjack Lake (see Stillwater River map)

Day use only; hand launch only (primitive).

**Directions:** From Whitefish, go approximately 12 miles on Hwy 93 north, then left on Farm To Market Road for 6 miles, then right on Bootjack Lake Road for 1.5 miles. (R1)

## Skyles Lake (Largemouth Bass, Northern Pike, Yellow Perch)

### Skyles Lake (see Stillwater River map)

Day use only; hand launch only (primitive).

**Directions:** 3 miles west of Whitefish on Hwy 93. (R1)



## Western Fishing District FAS Pictures



Blanshard Lake FAS - near Whitefish



Harper's Bridge FAS - near Missoula